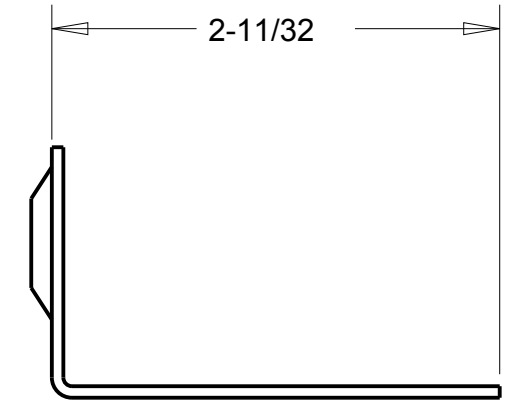
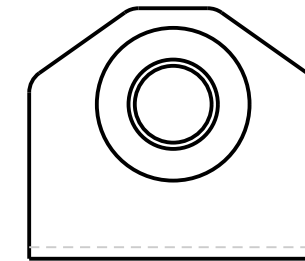
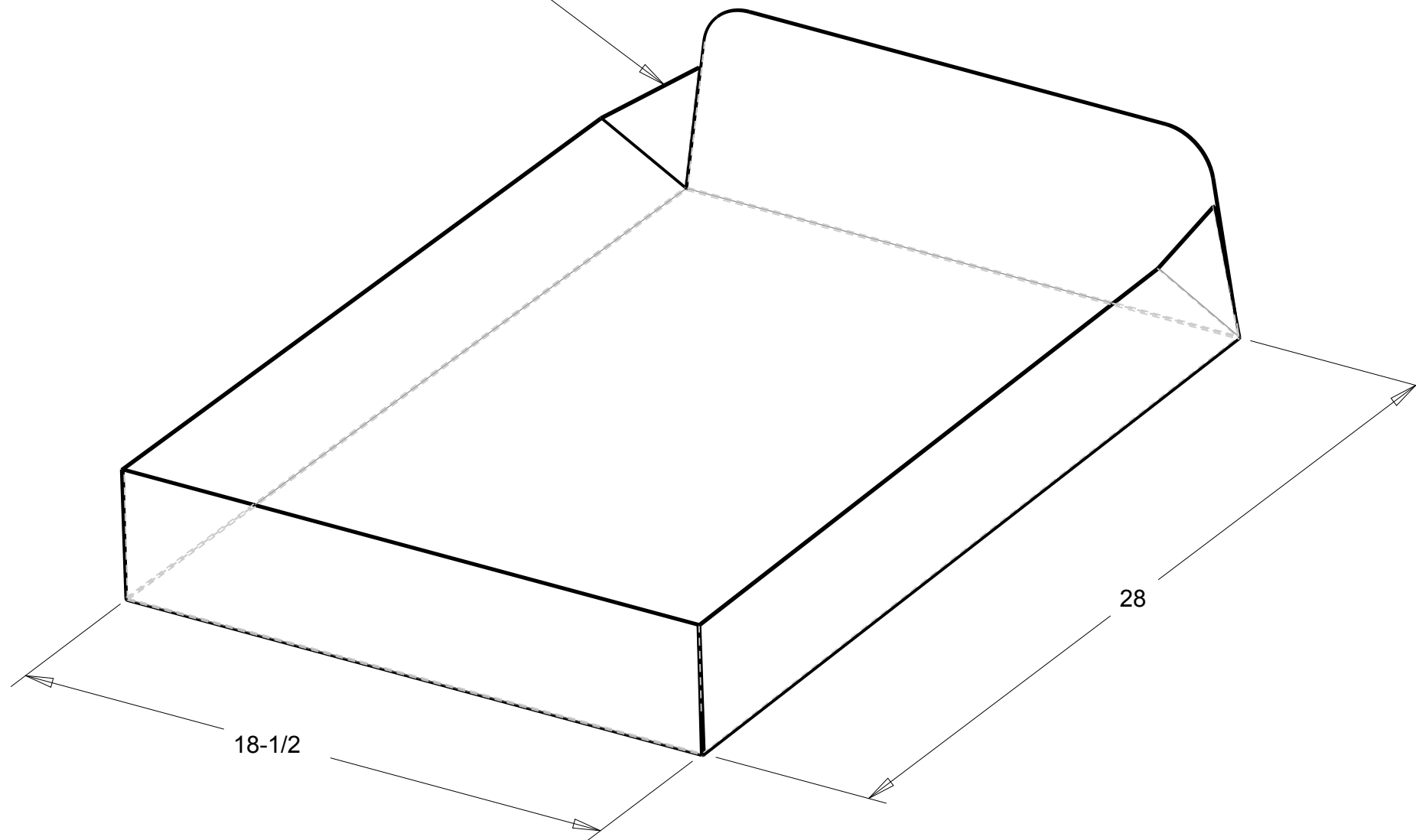


05-171-1



BEND BY HAND TO CLOSE
BACK CORNERS. START
BEND APPX 4" FROM END



NOTE: PAN MUST BE WATER
TIGHT AFTER WELDING.

S & W RACE CARS
11 MENNONITE CHURCH RD
SPRING CITY, PA 19475

REV	DATE	DRN	DESCRIPTION
0	24APR07	JEB	INITIAL RELEASE
TOLERANCES: FRACTIONS $\pm 1/32$ 2 PLC DEC ± 0.01 3 PLC DEC ± 0.005 ANGLES $\pm 0.5^\circ$			DRAGSTER BELLY PAN DETAILS
MAT'L: 0.050 ALUM			
PART No: 05-171-01			DRW No: 05-171 - 1