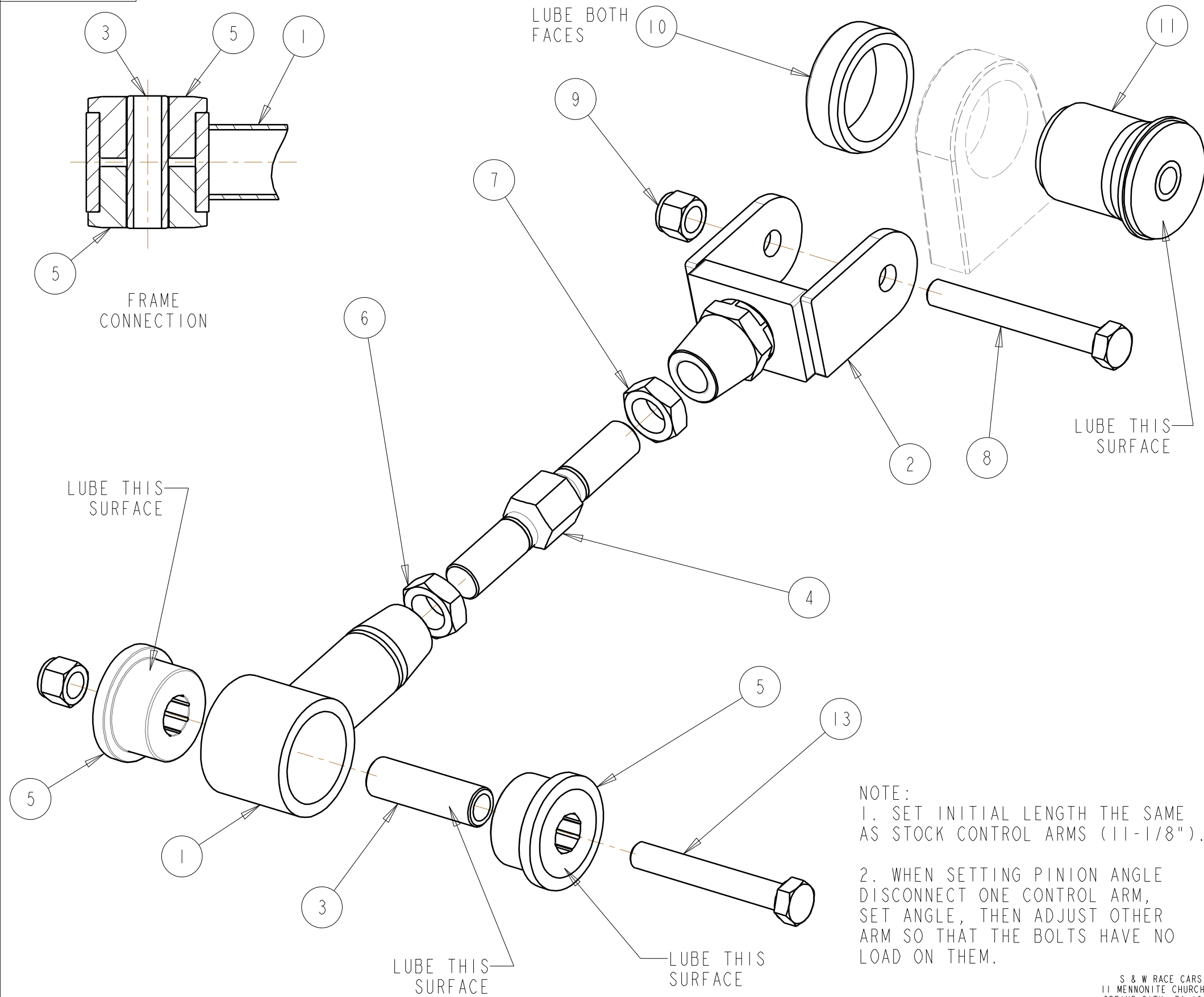
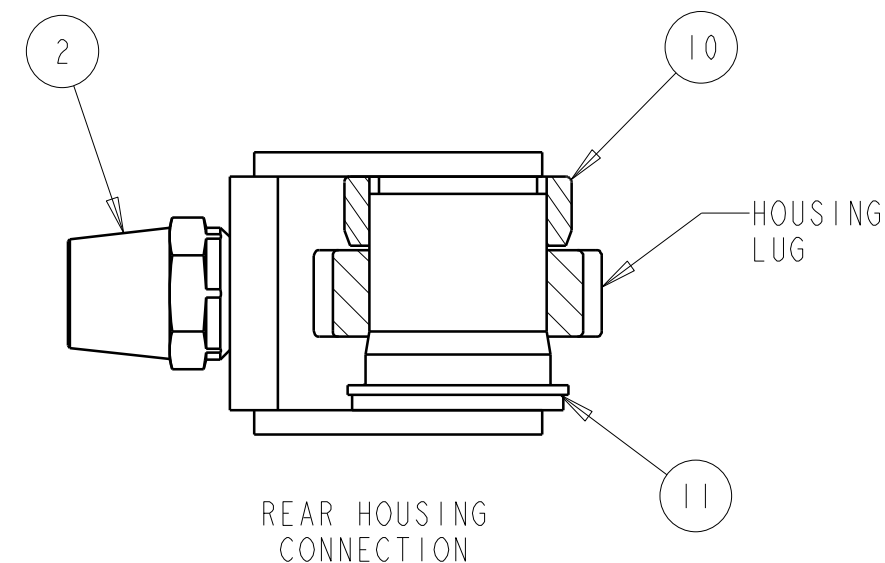


40-621-1



BILL OF MATERIALS

ITEM	QTY	PART No.	DESCRIPTION
1	2	40-621-01	FRONT LINK
2	2	40-621-02	HOUSING LINK
3	2	40-602-03	STEEL INNER SLEEVE
4	2	65-1002	HEX ADJUSTER, DBL MALE
5	4	40-602-02	POLY BUSHING
6	2	65-120	3/4 JAM NUT
7	2	65-121	3/4 LH JAM NUT
8	4	65-052	1/2 X 4" LG BOLT
9	4	65-135	1/2 NYLOCK NUT
10	1	40-621-03	POLY THRUST WASHER
11	1	40-621-04	POLY BUSHING w/ STL SHELL
12	1	40-601-00	POLY BUSHING LUBE
13	2	65-051	1/2 X 3-1/2" LG BOLT



NOTE:
 1. SET INITIAL LENGTH THE SAME AS STOCK CONTROL ARMS (11-1/8").
 2. WHEN SETTING PINION ANGLE DISCONNECT ONE CONTROL ARM, SET ANGLE, THEN ADJUST OTHER ARM SO THAT THE BOLTS HAVE NO LOAD ON THEM.

S & W RACE CARS
 11 MENNONITE CHURCH RD
 SPRING CITY, PA 19475

REV	DATE	DRN	DESCRIPTION
0	14APR10	JEB	PRELIMINARY RELEASE
TOLERANCES: FRACTIONS ±1/32 2 PLC DEC ±0.01 3 PLC DEC ±0.005 ANGLES ±0.5°			UPPER CONTROL ARM 77-88 GM G-BODY GENERAL ARRANGEMENT ISO VIEW
MAT'L:			
PART No: 40-621			DRW No: 40-621 - 1

INSTALLATION INSTRUCTIONS

1. RAISE THE CAR AND SUPPORT THE FRAME AND REAR HOUSING SO THAT THEY CAN NOT MOVE WHEN THE CONTROLL ARMS ARE REMOVED. REMOVE & INSTALL ONE UPPER CONTROLL ARM AT A TIME.
2. REMOVE ONE CONTROLL ARM.
3. REMOVE THE OEM UPPER CONTROL ARM BUSHING FROM THE LUG ON THE CENTER SECTION. INSTALL THE NEW POLY BUSHING & THRUST WASHER.
3. LIGHTLY GREASE THE OD OF THE FRONT POLY BUSHINGS. INSTALL IN FRONT LINK. LUBE THE OD OF THE STEEL INNER SLEEVE AND PUSH INTO FRONT POLY BUSHINGS. ASSEMBLE THE U-BRACKET, HEX ADJUSTER & JAM NUTS AND THE FRONT LINK. ADJUST THE NEW CONTROL ARM LENGTH TO MATCH THE STOCK ARM LENGTH (11-1/8" ON CENTERS). DO NOT TIGHTEN JAM NUTS.
4. INSTALL THE NEW UPPER CONTROLL ARM. BOLT THE U-BRACKET TO THE REAR HOUSING. SWING THE CONTROL ARM INTO PLACE. BOLT THE FRONT OF THE ARM TO THE CHASSIS BRACKET. DO NOT TIGHTEN THE BOLTS AT THIS TIME.
5. REPEAT THE ABOVE STEPS FOR THE OTHER SIDE.
6. WITH THE CAR AT RIDE HEIGHT AND ALL OF THE WEIGHT BEING SUPPORTED BY THE SUSPENSION, CHECK THE PINION ANGLE. THE PINION ANGLE SHOULD BE 0° - 1 1/2° DOWN. TO ADJUST PINION ANGLE REMOVE ONE OF THE U-BRACKET BOLTS AND TURN THE HEX ADJUSTER ON THE OTHER CONTROL ARM. TIGHTEN THE JAM NUTS ON THE ARM YOU ADJUSTED. ADJUST THE OTHER LINK TO FIT AND BOLT IT IN. TIGHTEN THE JAM NUTS. TIGHTEN THE FRONT AND REAR NUTS & BOLTS OF BOTH CONTROL ARMS.

0	02MAR10	JEB	INITIAL RELEASE
REV	DATE	DRN	DESCRIPTION
TOLERANCES: FRACTIONS ±1/32 2 PLC DEC ±0.01 3 PLC DEC ±0.005 ANGLES ±0.5°		UPPER CONTROL ARM INSTRUCTIONS	
MAT'L:			
S & W RACE CARS 11 MENNONITE CHURCH RD SPRING CITY, PA 19475		Part No: 40-621	DWR No: 40-621 - 2