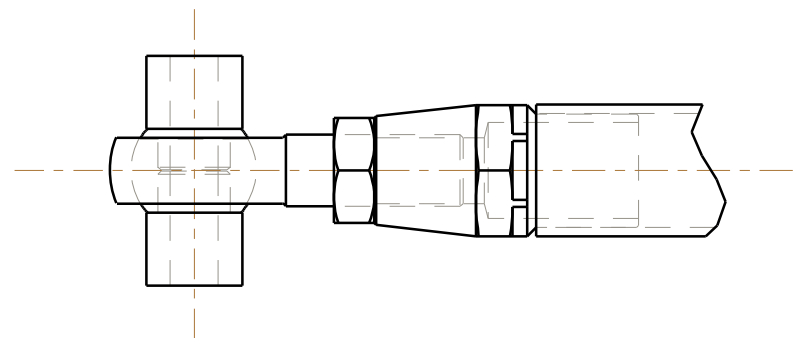


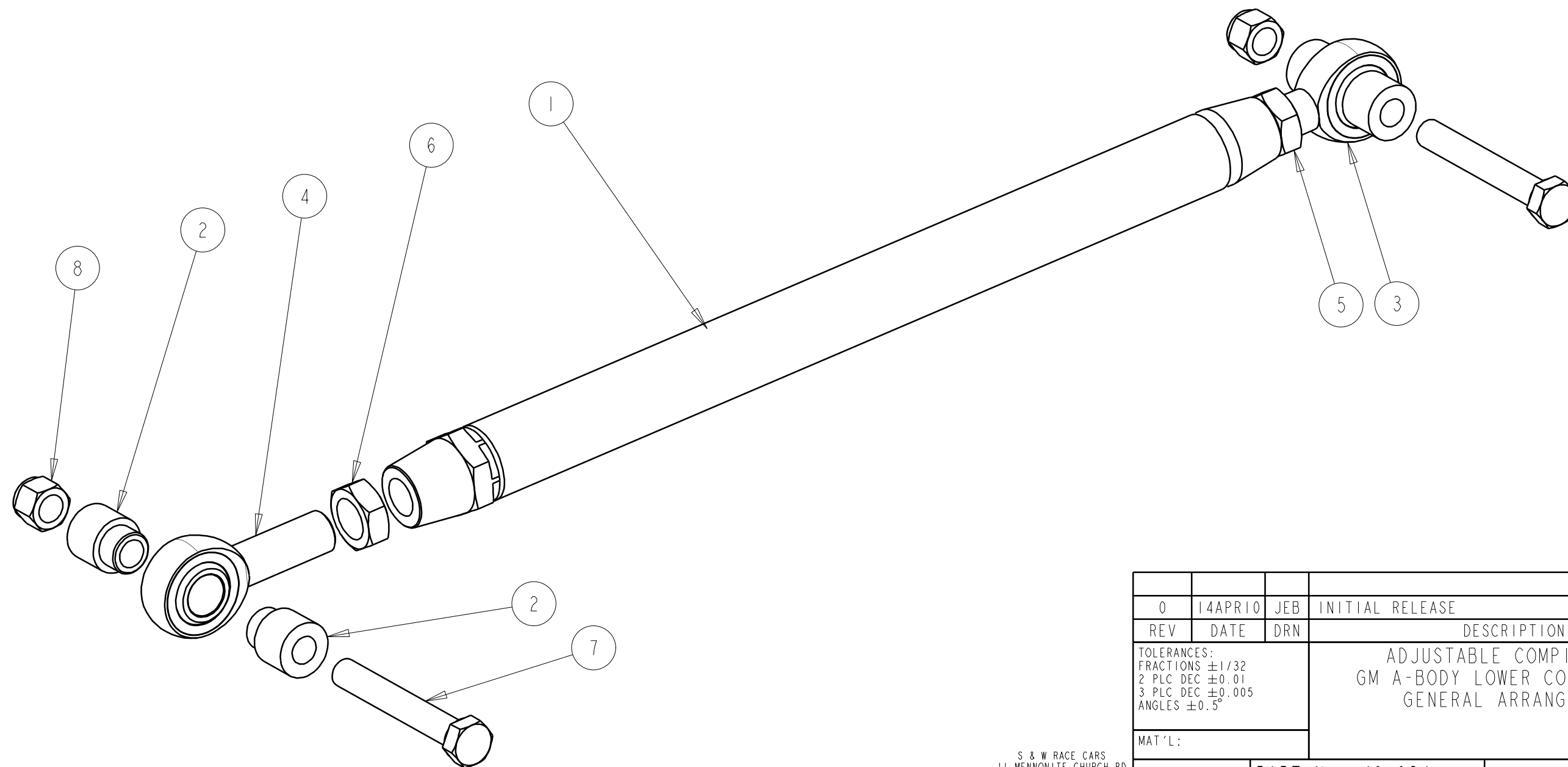
40-624-1

NOTE:
1. SET INITIAL LENGTH THE SAME
AS STOCK CONTROL ARMS (22").



BILL OF MATERIALS

ITEM	QTY	PART No.	DESCRIPTION
1	2	40-624-01	LOWER CONTROL ARM WELDMENT
2	8	40-723-03	SPACER-BUSHONG
3	2	64-212	3/4" ROD END
4	2	64-412	3/4" LH ROD END
5	2	65-120	3/4 JAM NUT
6	2	65-121	3/4 LH JAM NUT
7	4	65-051	1/2 X 3 1/2" LG BOLT
8	4	65-135	1/2 NYLOCK NUT



0	14APR10	JEB	INITIAL RELEASE
REV	DATE	DRN	DESCRIPTION
TOLERANCES: FRACTIONS ±1/32 2 PLC DEC ±0.01 3 PLC DEC ±0.005 ANGLES ±0.5°			ADJUSTABLE COMPITION GM A-BODY LOWER CONTROL ARM GENERAL ARRANGEMENT
MAT'L:			
PART No: 40-624			DRW No: 40-624 - 1

S & W RACE CARS
11 MENNONITE CHURCH RD
SPRING CITY, PA 19475