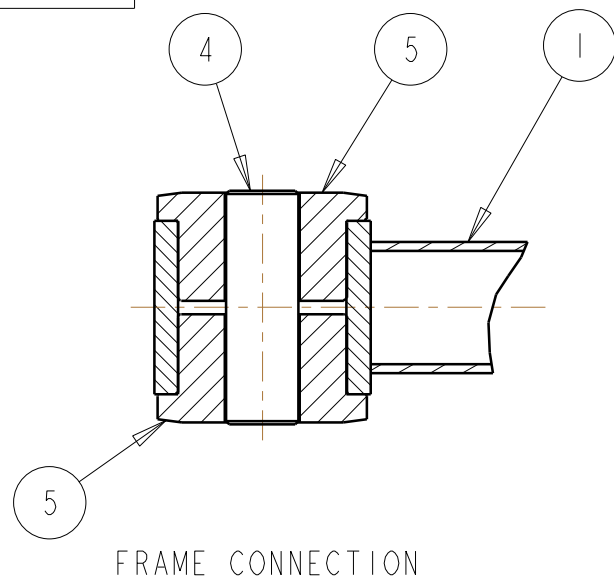


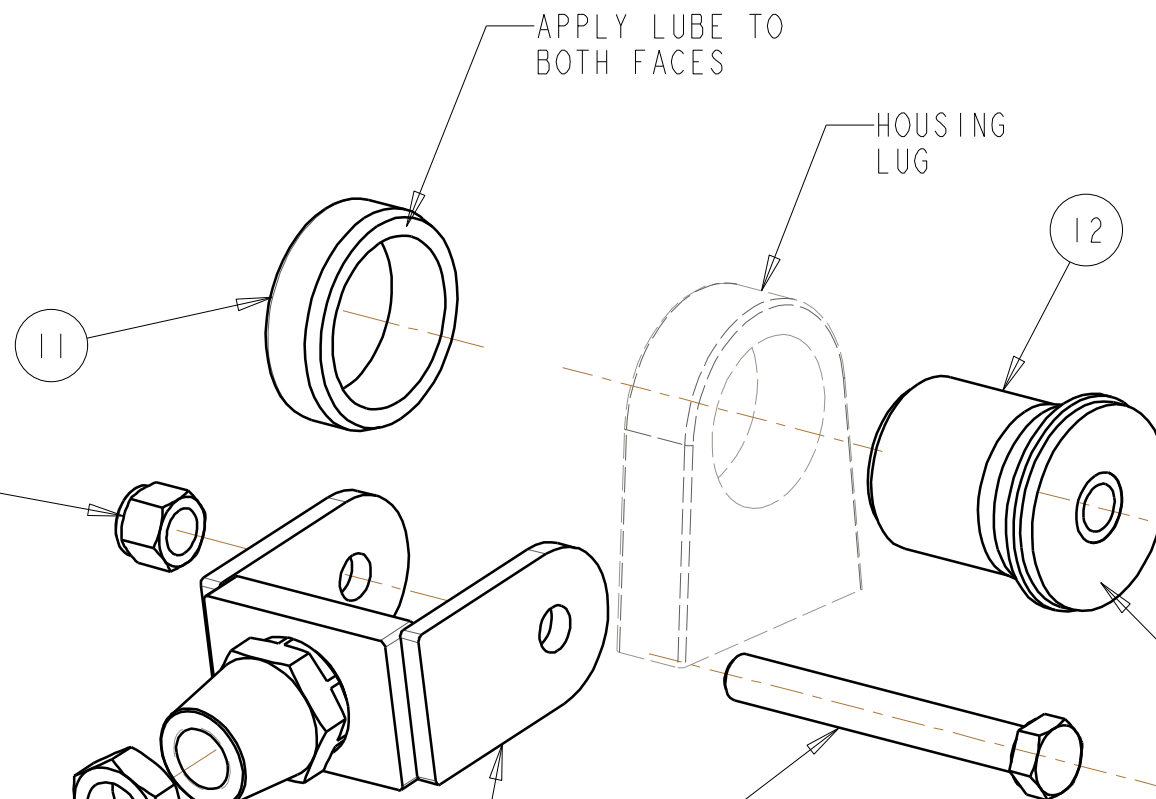
40-626-1

BILL OF MATERIALS

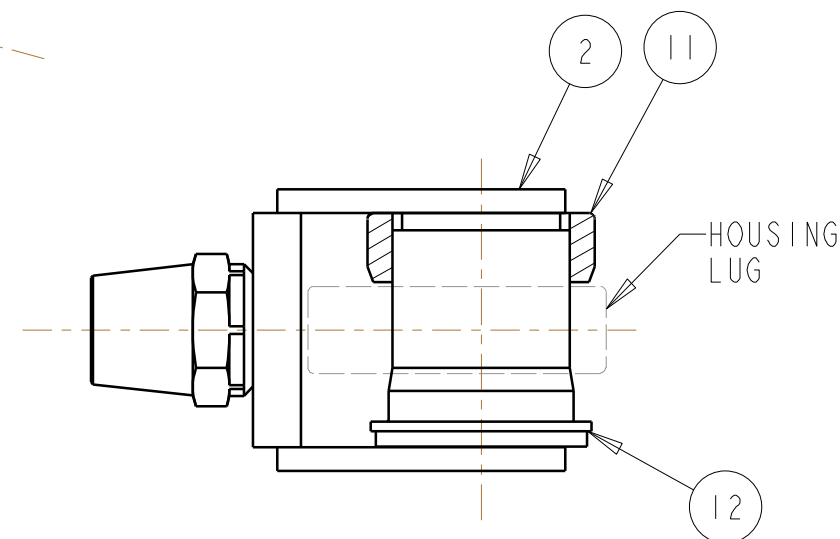
ITEM	QTY	PART No.	DESCRIPTION
1	2	40-626-02	FRONT LINK
2	2	40-621-01	HOUSING LINK
3	2	65-1002	HEX ADJUSTER, DBL MALE
4	2	40-602-03	STEEL INNER SLEEVE
5	4	40-602-02	POLY BUSHING
6	2	65-120	3/4 RH JAM NUT
7	2	65-121	3/4 LH JAM NUT
8	2	65-052	1/2 X 4" LG BOLT
9	2	65-051	1/2 X 3-1/2" LG BOLT
10	4	65-135	1/2 NYLOCK NUT
11	2	40-621-03	THRUST WASHER
12	2	40-621-04	SHELL ASSY



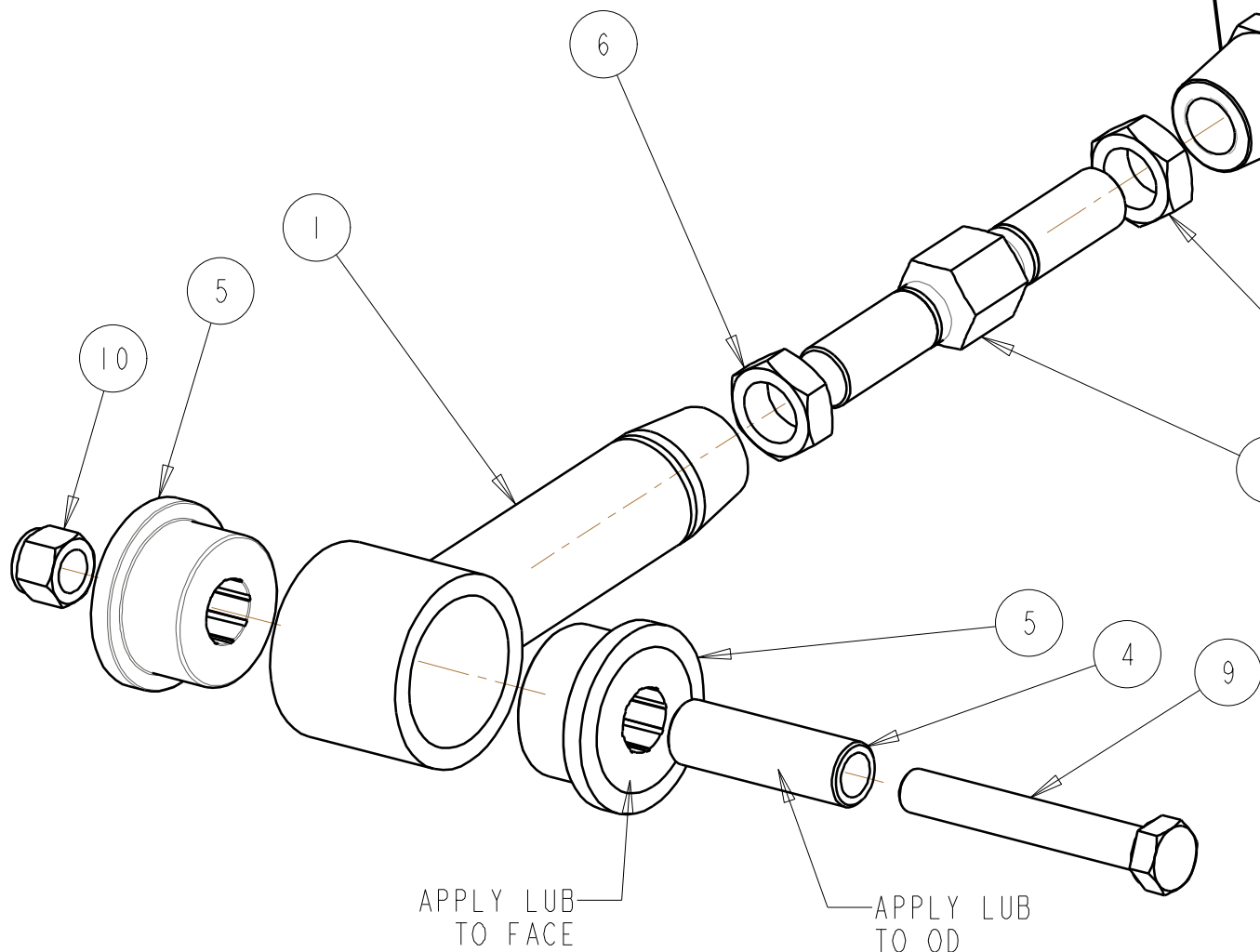
FRAME CONNECTION



APPLY LUBE TO FACE



REAR HOUSING CONNECTION



APPLY LUB TO FACE

APPLY LUB TO OD

NOTE:
 1. ASSEMBLE & INSTALL ONE CONTROL ARM AT A TIME. DO NOT TIGHTEN THE NUTS AND BOLT AT THIS TIME. SET INITIAL LENGTH THE SAME AS STOCK CONTROL ARMS (12-7/8").

2. WHEN SETTING PINION ANGLE DISCONNECT ONE CONTROL ARM, SET ANGLE, THEN ADJUST OTHER ARM SO THAT THE BOLTS HAVE NO LOAD ON THEM.

3. WITH BOTH THE NEW CONTROL ARMS INSTALLED, THE CAR AT RIDE HEIGHT & THE WEIGHT ON THE TIRES TIGHTEN ALL NUTS AND BOLTS.

REV	DATE	DRN	DESCRIPTION
0	19MAY10	JEB	INITIAL RELEASE
			UPPER CONTROL ARM 64-67 GM A-BODY GENERAL ARRANGEMENT
TOLERANCES: FRACTIONS ±1/32 2 PLC DEC ±0.01 3 PLC DEC ±0.005 ANGLES ±0.5°			
MAT'L:			
PART No: 40-626			DRW No: 40-626 - 1

S & W RACE CARS
 11 MENNONITE CHURCH RD
 SPRING CITY, PA 19475