

40-628-1

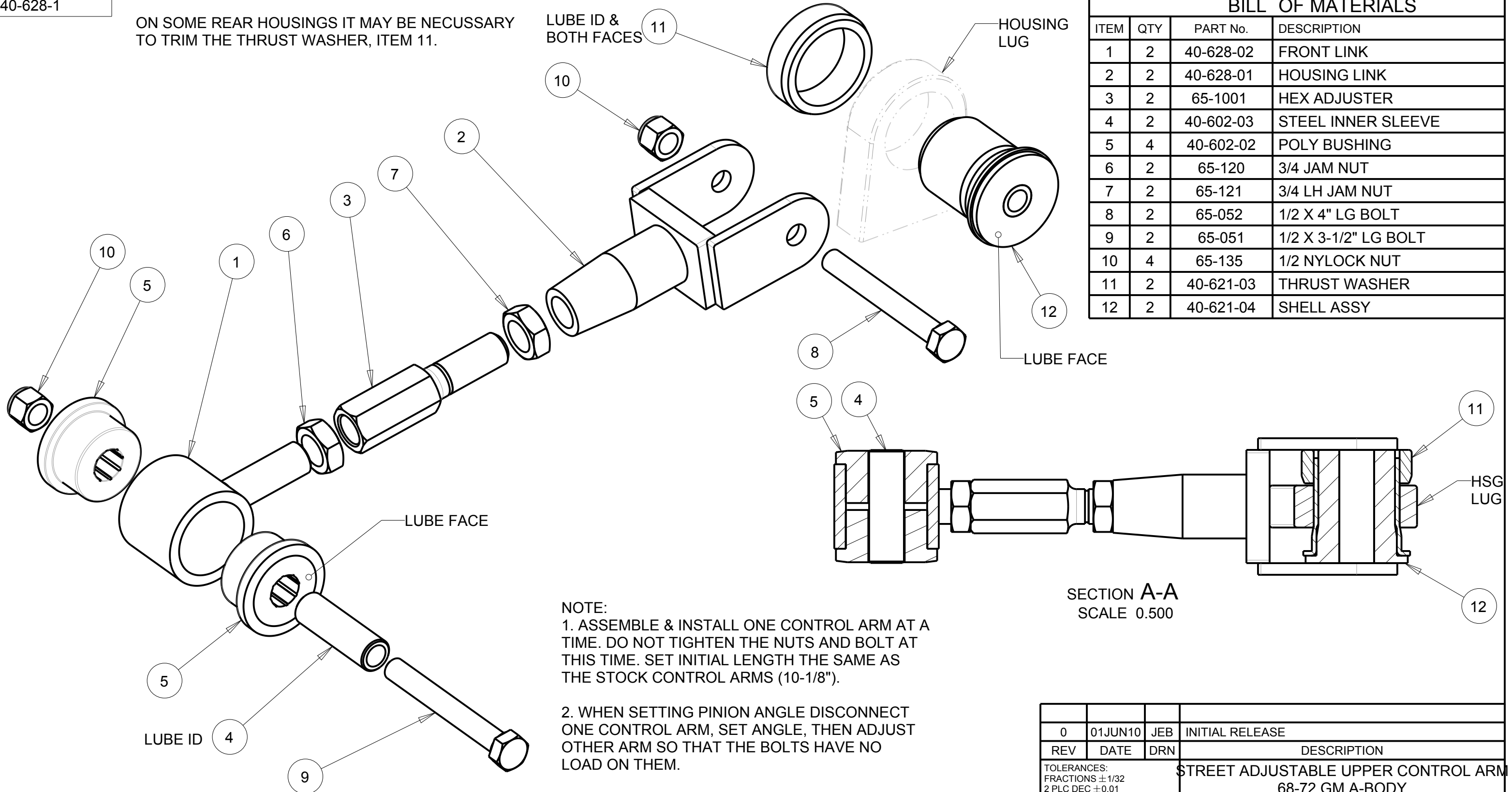
ON SOME REAR HOUSINGS IT MAY BE NECESSARY TO TRIM THE THRUST WASHER, ITEM 11.

LUBE ID & BOTH FACES

HOUSING LUG

BILL OF MATERIALS

ITEM	QTY	PART No.	DESCRIPTION
1	2	40-628-02	FRONT LINK
2	2	40-628-01	HOUSING LINK
3	2	65-1001	HEX ADJUSTER
4	2	40-602-03	STEEL INNER SLEEVE
5	4	40-602-02	POLY BUSHING
6	2	65-120	3/4 JAM NUT
7	2	65-121	3/4 LH JAM NUT
8	2	65-052	1/2 X 4" LG BOLT
9	2	65-051	1/2 X 3-1/2" LG BOLT
10	4	65-135	1/2 NYLOCK NUT
11	2	40-621-03	THRUST WASHER
12	2	40-621-04	SHELL ASSY



NOTE:

1. ASSEMBLE & INSTALL ONE CONTROL ARM AT A TIME. DO NOT TIGHTEN THE NUTS AND BOLT AT THIS TIME. SET INITIAL LENGTH THE SAME AS THE STOCK CONTROL ARMS (10-1/8").

2. WHEN SETTING PINION ANGLE DISCONNECT ONE CONTROL ARM, SET ANGLE, THEN ADJUST OTHER ARM SO THAT THE BOLTS HAVE NO LOAD ON THEM.

3. WITH BOTH THE NEW CONTROL ARMS INSTALLED, THE CAR AT RIDE HEIGHT & THE WEIGHT ON THE TIRES TIGHTEN ALL NUTS AND BOLTS.

SECTION A-A
SCALE 0.500

S & W RACE CARS
11 MENNONITE CHURCH RD
SPRING CITY, PA 19475

REV	DATE	DRN	DESCRIPTION
0	01JUN10	JEB	INITIAL RELEASE
			STREET ADJUSTABLE UPPER CONTROL ARM
			68-72 GM A-BODY
			GENERAL ARRANGEMENT
PART No: 40-628			DRW No: 40-628 - 1

TOLERANCES:
FRACTIONS ±1/32
2 PLC DEC ±0.01
3 PLC DEC ±0.005
ANGLES ±0.5°

MAT'L: