

40-721-1

INSTALLATION INSTRUCTIONS

1. RAISE AND SUPPORT CAR UNDER THE FRAME AND REAR HOUSING SO THAT THEY DO NOT MOVE WHEN THE CONTROLL ARE IS REMOVED.

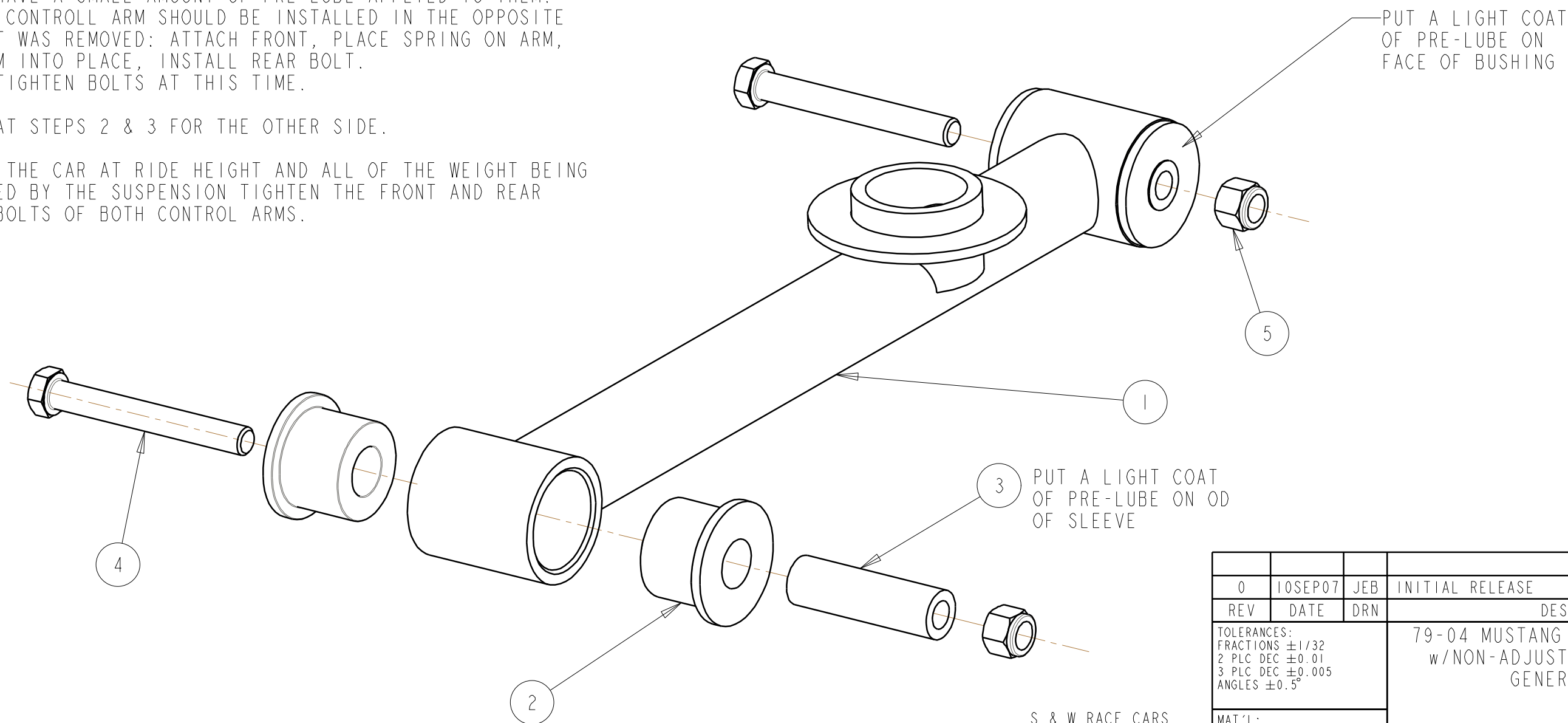
2. REMOVE & INSTALL ONE LOWER CONTROLL ARM AT A TIME. USE CATION THE LOWER CONTROL ARM HAS A LOAD ON IT FROM THE SPRING. PLACE A JACK UNDER THE BACK OF THE LOWER CONRTROLL ARM. REMOVE THE REAR BOLT AND LOWER THE JACK. REMOVE THE FRONT BOLT AND CONTROLL ARM.

3. ASSEMBLE & INSTALL ONE NEW LOWER CONTROLL ARM. THE OD OF THE STEEL SLEEVE & THE SIDES OF THE POLY BUSINGS SHOULD HAVE A SMALL AMOUNT OF PRE-LUBE APPLIED TO THEM. THE NEW CONTROLL ARM SHOULD BE INSTALLED IN THE OPPOSITE ORDER IT WAS REMOVED: ATTACH FRONT, PLACE SPRING ON ARM, JACK ARM INTO PLACE, INSTALL REAR BOLT. DO NOT TIGHTEN BOLTS AT THIS TIME.

4. REPEAT STEPS 2 & 3 FOR THE OTHER SIDE.

5. WITH THE CAR AT RIDE HEIGHT AND ALL OF THE WEIGHT BEING SUPPORTED BY THE SUSPENSION TIGHTEN THE FRONT AND REAR NUTS & BOLTS OF BOTH CONTROL ARMS.

BILL OF MATERIALS			
ITEM	QTY	PART No	DESCRIPTION
1	2	40-711-01	LOWER CONTROL ARM WELDMENT
2	8	ES-2233	POLY BUSHING
3	4	ES-15_10_482	STEEL SLEEVE
4	4	65-052	1/2 X 4" LG BOLT
5	4	65-135	1/2 NYLOCK NUT



S & W RACE CARS
11 MENNONITE CHURCH RD
SPRING CITY, PA 19475

0	10SEP07	JEB	INITIAL RELEASE
REV	DATE	DRN	DESCRIPTION
TOLERANCES: FRACTIONS ±1/32 2 PLC DEC ±0.01 3 PLC DEC ±0.005 ANGLES ±0.5°			79-04 MUSTANG LOWER CONTROL ARM w/NON-ADJUSTABLE SPRING SEAT GENERAL ARR'G'T
MAT'L:			
PART No: 40-721-01			DRW No: 40-721 - 1