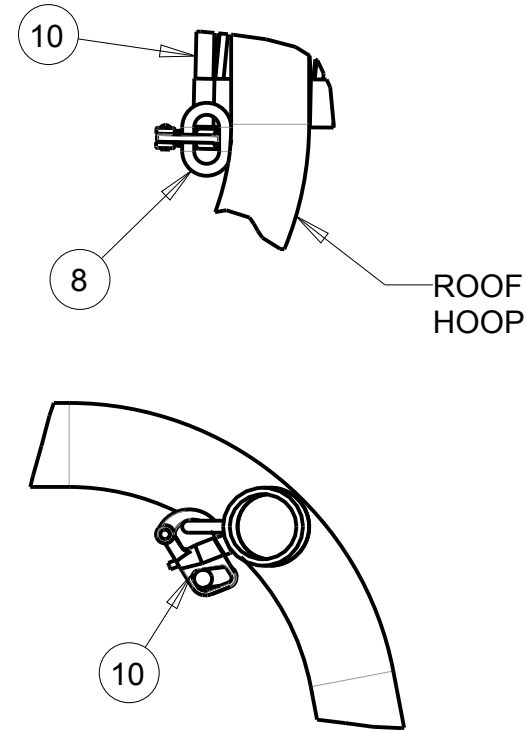
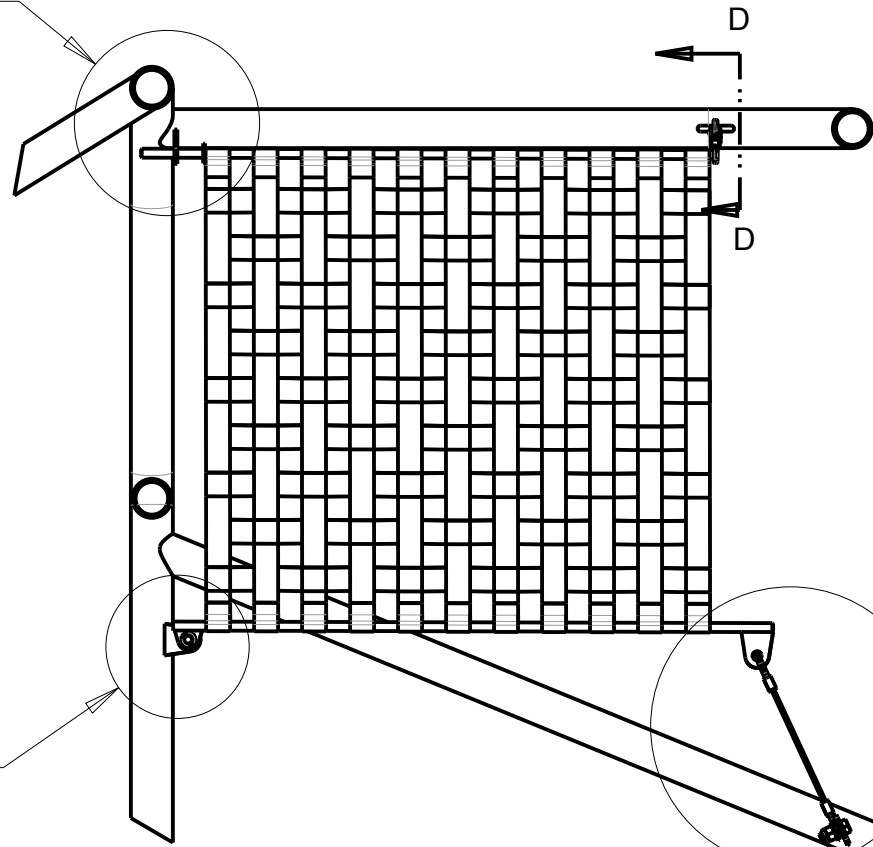


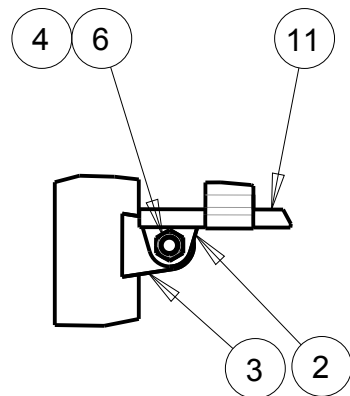
75-387-1

DETAIL C

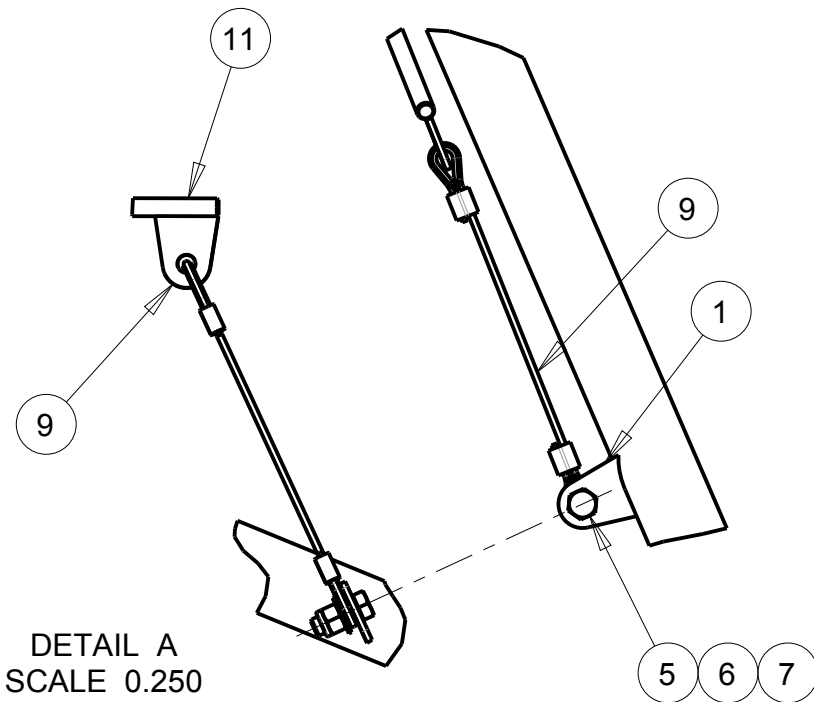


DETAIL A

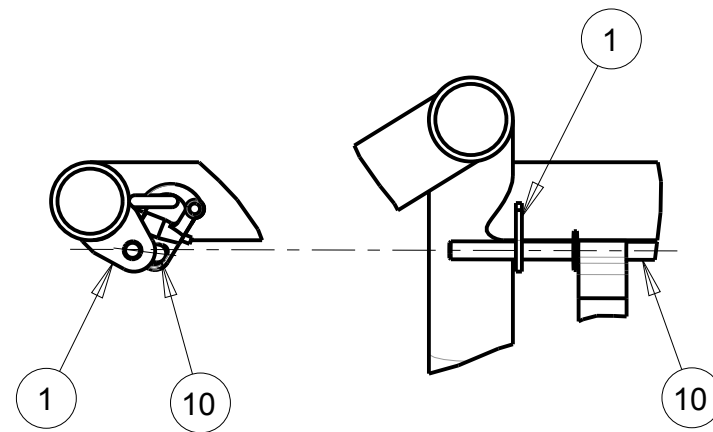
DETAIL B



DETAIL B
SCALE 0.250



DETAIL A
SCALE 0.250

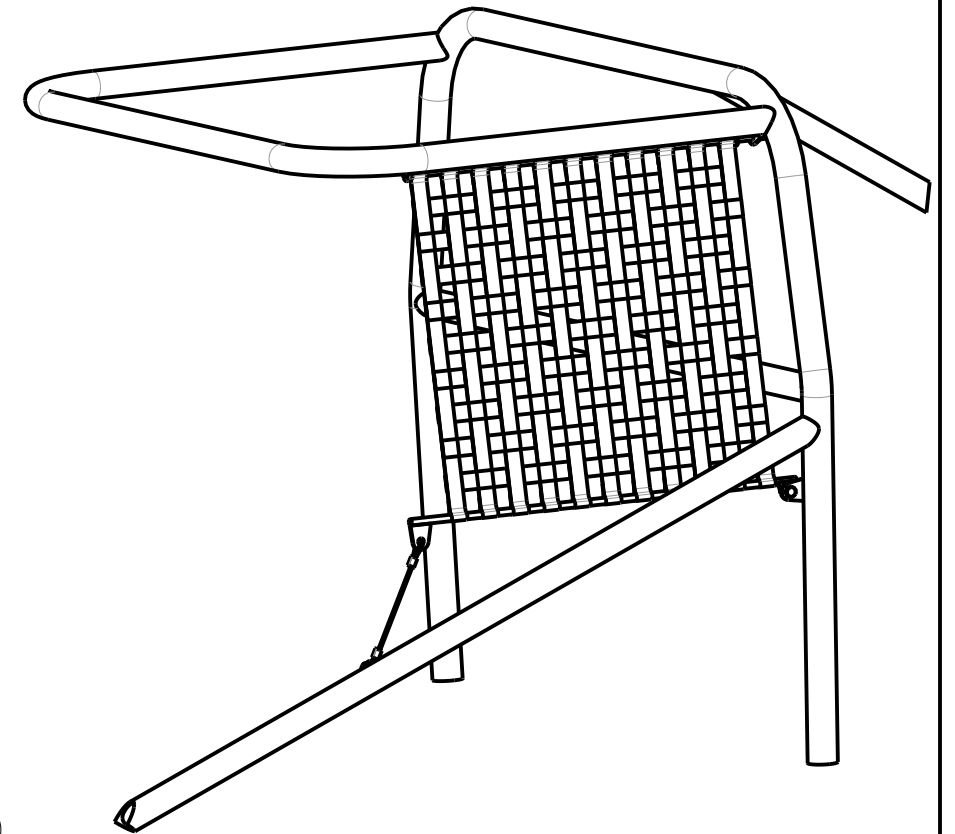


DETAIL C
SCALE 0.250

S & W RACE CARS
11 MENNONITE CHURCH RD
SPRING CITY, PA 19475

BILL OF MATERIALS

ITEM	QTY	PART No.	DESCRIPTION
1	1	60-308	SEAT BELT TAB
2	1	60-308A	SEAT BELT TAB
3	2	60-314	UNIVERSAL TAB
4	1	65-023	3/8 X 3/4" BOLT
5	1	65-024	3/8 X 1" BOLT
6	2	65-132	3/8 NYLOCK NUT
7	2	65-202	3/8 FLAT WASHER
8	1	65-407	LINK
9	1	75-3702	WINDOW NET CABLE ASSY
10	1	75-3871	WINDOW NET ROD & CLIP
11	1	375RNDMSX30	3/8" X 30" BAR



REV	DATE	JEB DRN	DESCRIPTION
0	19JUL17	JEB	INITIAL RELEASE
TOLERANCES: FRACTIONS ±1/32 2 PLC DEC ±0.01 3 PLC DEC ±0.005 ANGLES ±0.5°			TYPICAL INSTALLATION GENERAL ARRANGEMENT
MAT'L:			
PART No: 75-387			DRW No: 75-387 - 1

75-387

WINDOW NET MOUNTING KIT w/QUICK LATCH RELEASE

Note: Consult your sanctioning bodies rule book for rules on window nets and mounting locations, before installing this kit.

During installation and welding take care to keep from damaging the net.

- 1) Slide your window net over the upper and lower rods of the mounting kit.
- 2) Locate the upper and lower mounting points on your roll cage. Keep the net as tight as possible when doing this.
- 3) Tack weld the top rear mounting tab to the roll cage. Locate it as close to the main hoop as possible.
- 4) Slide the upper mounting rod into the top rear tab. With the net in position determine the location of the top front mounting link. Tack weld the link to the roll cage.
- 5) Tack weld the small tab to the end of the lower mounting rod.
- 6) Bolt one of the large mounting tabs to the tab on rear of the lower mounting rod. Pull the net tight and tack weld the mounting tab to the roll cage. Trim the tab as needed.
- 7) Tack weld the tab on the cable assembly to the front of the lower mounting rod, with the cable hanging down.
- 8) Bolt the small mounting tab to the bottom of the cable. With the cable pulled tight, tack weld the tab to the side bar of the roll cage.
- 9) Slide a 3/8 washer over the top mounting rod behind the net. With the window net in position, put the washer against the back of the net. Tack weld the washer to the upper mounting rod.
- 10) If you are satisfied with the fit remove the net and finish welding all mounting tabs.

0	19JUL17	JEB		INITIAL RELEASE
REV	DATE	DRN	APP'R	DESCRIPTION
TOLERANCES: FRACTIONS $\pm 1/32$ 2 PLC DEC ± 0.01 3 PLC DEC ± 0.005 ANGLES $\pm 0.5^\circ$			INSTALLATION INSTRUCTIONS	
MAT'L:				
			Part No: 75-387	DWR No: 75-387 - 2



S & W RACE CARS
11 MENNONITE CHURCH RD
SPRING CITY, PA 19475