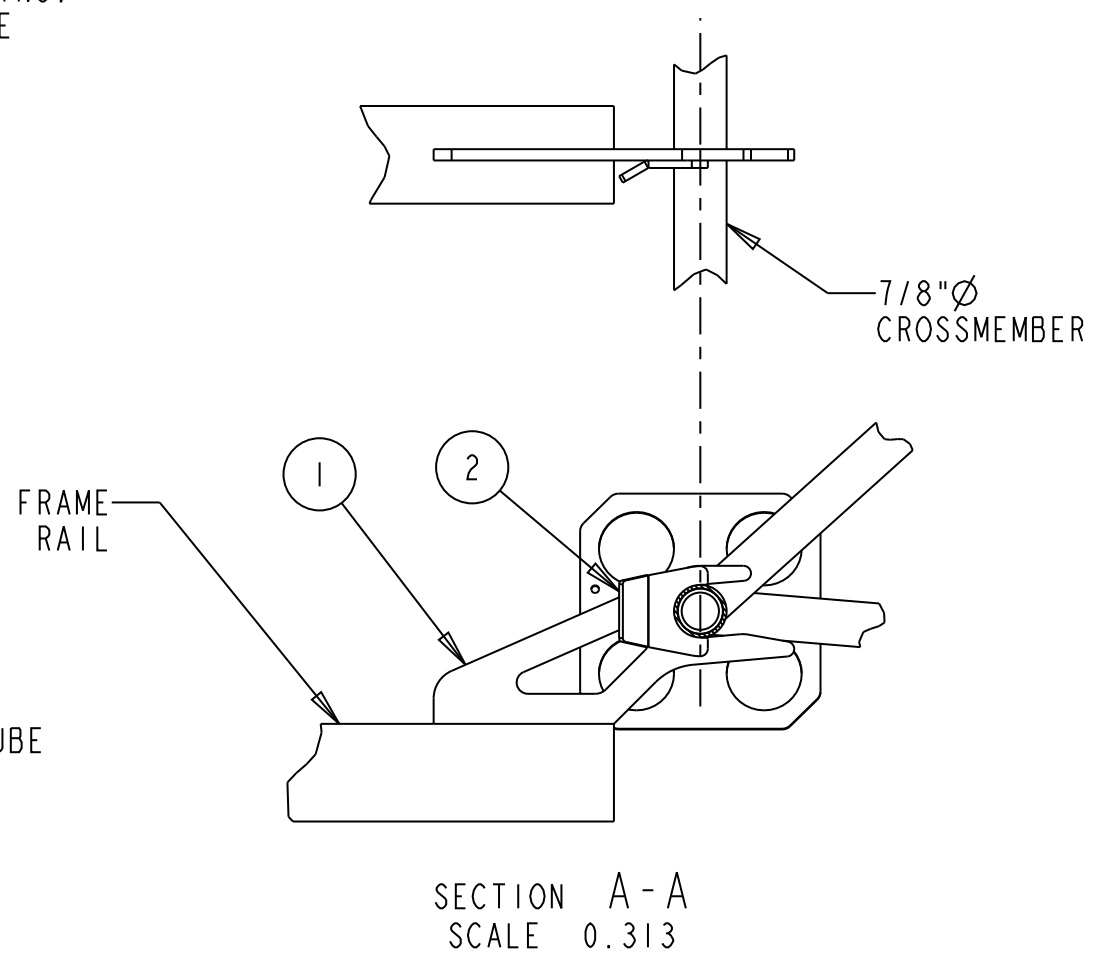
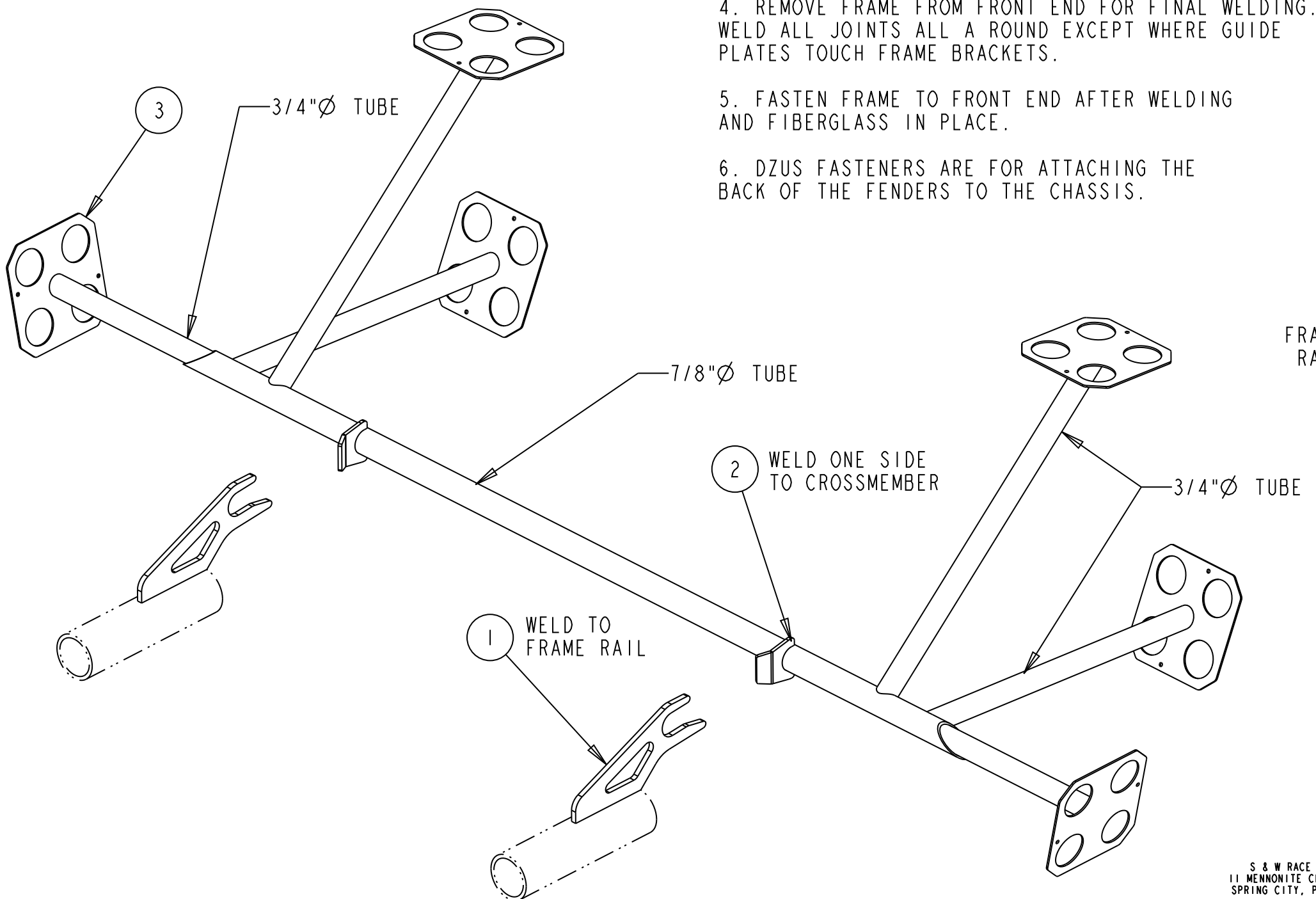


95-502-1

- NOTE:
1. TACK WELD CROSSMEMBER BRACKETS TO FRAME RAILS. SET CROSSMEMBER IN PLACE & DETERMINE LOCATION OF BODY PADS.
  2. TEMPORARILY ATTACH BODY PADS TO FRONT END.
  3. TACK WELD TUBES TO PADS. BUILD FRONT BODY MOUNT FRAME.
  4. REMOVE FRAME FROM FRONT END FOR FINAL WELDING. WELD ALL JOINTS ALL A ROUND EXCEPT WHERE GUIDE PLATES TOUCH FRAME BRACKETS.
  5. FASTEN FRAME TO FRONT END AFTER WELDING AND FIBERGLASS IN PLACE.
  6. DZUS FASTENERS ARE FOR ATTACHING THE BACK OF THE FENDERS TO THE CHASSIS.

BILL OF MATERIALS			
ITEM	QTY	PART No.	DESCRIPTION
1	2	60-380	BODY MNT CROSSMEMBER BRKT
2	2	60-391	GUIDE PLATE - 7/8
3	6	95-501	BODY MNTG PAD
4	2	750X058CMX18	3/4 X 0.058 TUBE
5	4	750X058CMX24	3/4 X 0.058 TUBE
6	1	875X058CMX36	7/8 X 0.058 TUBE



0	11NOV11	JEB	INITIAL RELEASE
REV	DATE	DRN	DESCRIPTION
TOLERANCES: FRACTIONS ±1/32 2 PLC DEC ±0.01 3 PLC DEC ±0.005 ANGLES ±0.5°			BODY FRONT END MNTG KIT GENERAL ARRANGEMENT
MAT'L:			
PART No: 95-502			DRW No: 95-502 - 1

S & W RACE CARS  
11 MENNONITE CHURCH RD  
SPRING CITY, PA 19475